



DESKTOP AUTHORITY®

PATCH DISTRIBUTION and DEPLOYMENT OPTION

Too many desktops. Too many software patches. Too few Administrators.

Sound familiar? With Microsoft releasing new updates to their operating systems and software products every month, administrators require a solution to centrally download, distribute and deploy patches. Desktop Authority's Patch Distribution and Deployment option gives administrators Patch Management with maximum control.

Increasingly, threats that take advantage of known vulnerabilities are written in as little as 5 days of a patch being released by Microsoft. It is imperative that your network be secured as soon as a patch is made available. Building on the enterprise desktop configuration platform found in Desktop Authority, the Patch Distribution and Deployment (PDD) option takes the task of patch management and makes it as simple as mapping a drive.

INTEGRATED SOLUTION

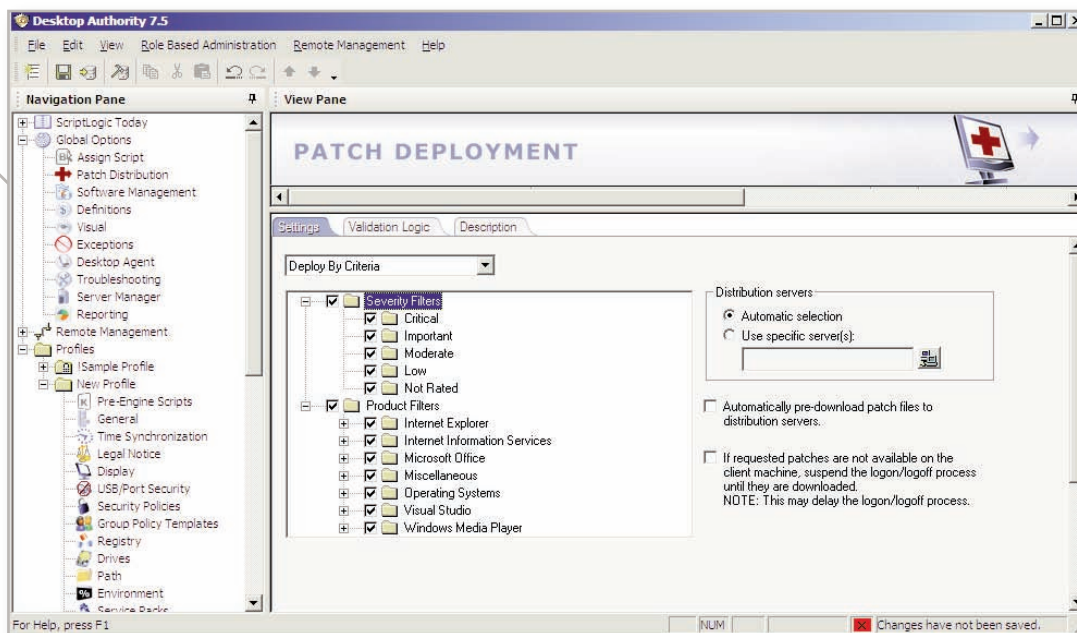
Rather than having to use a separate Patch Management tool to manage patch deployment on desktops, administrators using Desktop Authority will find the PDD option to be fully integrated into Desktop Authority's easy-to-use interface. This means that administrators who are already familiar with Desktop Authority's interface have little or no learning curve to quickly begin deploying patches.

SIMPLE IMPLEMENTATION

Desktop Authority automatically updates its list of available patches from both Microsoft and select 3rd party vendors and makes them available for deployment. Configuring patches to be deployed is as simple as either selecting specific patches to deploy, or selecting a category of patches for automatic deployment based on severity and/or platform to be patched.

Maximum control over when and where patches are deployed is achieved with the use of Desktop Authority's patented Validation Logic technology. With Validation Logic it is possible to automate patch deployment based on a wide range of criteria - for example, to automatically deploy all "severe" and "important" patches to the general user population on the local network, but only "severe" patches to laptop users when they are on remote connections.

With an easy-to-use interface and use of Validation Logic, Desktop Authority's Patch Distribution and Deployment option is a completely integrated and comprehensive patch management solution.



KEY BENEFITS

Centralized Management

A single management console allows you to download and deploy patches on all desktops from a central location.

Support for Multiple Windows Versions

Patch Windows versions from NT 4 to XP.

Immediate Desktop Protection

Up-to-date patching means zero exposure to threats written against known OS and Microsoft software vulnerabilities.

KEY FEATURES

Comprehensive Patching

Patches include both Microsoft Operating System and applications, as well as 3rd party applications from Adobe, Real, FireFox and WinZip. Patches to be managed can be selected based on patch severity and product patched.

Integrated Management

Completely integrated into Desktop Authority, patch management is as easy as other familiar tasks within Desktop Authority.

Granular Management Selection

ScriptLogic's patented Validation Logic allows patches to only be deployed to desired users and computers, giving administrators the ability to stagger a deployment of patches, if required.

SYSTEM REQUIREMENTS

Management

Desktop Authority 6.5 or later.

Client Support

Windows NT/2000/XP.

LICENSING

Desktop Authority's Patch Distribution and Deployment (PDD) option is licensed as an **additional option** for Desktop Authority on a **per-seat basis**.

For pricing, contact your ScriptLogic reseller or call ScriptLogic at **1.800.813.6415**